



PaSharp™

World's Leading Packaging Prepress Application

Seamlessly support for Adobe Illustrator CS6 / CC2014

Powerful trapping tools

Specialized step & repeat functions

Easy-to-use editing tools

Efficient files comparison function

Great files checking tools





The PaSharp suite of prepress productivity tools has evolved from Founder's 30 years of accumulated research and development experience in the graphic arts. The PaSharp suite offers professional trapping tools, specialized step&repeat functions for packaging as well as a series of editing tools enabling prepress operators to boost efficiency and produce higher quality work.

Key Benefits

- ▶ Powerful functions--PaSharp encompasses all facets of packaging prepress with robust tools for professional trapping, step&repeat and a powerful set of editing tools.
- ▶ Standalone software--PaSharp impresses customers with complete convenience of prepress operation.
- ▶ Splendid compatibility--PaSharp can be combined with any PDF workflows, and operators can make any modifications in a second.
- ▶ Attentive technical support--PaSharp support team offers the best service and help to customers. Modularized products provide various choices in order to meet customers' needs.
- ▶ Multi-language support--English, Chinese & Japanese.

Trap# (Trap Sharp)

- Powerful trapping tools can efficiently accomplish trapping with high quality
- Professional trapping parameters
- Modification of trap areas
- Interactive trapping tool
- Special sliding traps between bidirectional gradients
- Trapping between images and graphics
- Rich black, Keepaway and White Underprint will greatly ease the prepress work
- Bilateral trapping & Trap edge direction tool
- Every trapping layer can be edited
- White knockout function

▶ Automatic trap

Professional trap parameters can manage complicated and high-risk trap process.



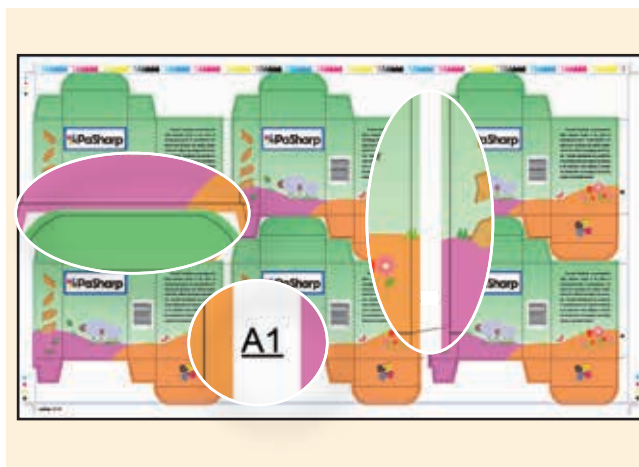
- ▶ Trap Color Pairs dialog box
Modify the trap width, end shape, trap direction and other parameters of the generated trap areas.



- ▶ “On Center” effect
The trap area ends at the center between the trapping object and object being trapped into.
- ▶ White UnderPrint
One key access, support gradation, transparent/ semitransparent image.
- ▶ Image trap
Image trap function supports trapping between graphics and images, including transparent image and bitmap.
- ▶ Quickly select and edit trapping result
Fast & free modification via “Trap edge basic selection tool” & “Trap edge direction tool”.

Nest#(Nest Sharp)

- Rapid Step & Repeat by coordinate settings in AI
- Directly import CAD layout (Support DXF and CFF2 files)
- Convenient interactive Step & Repeat tools
- Automatically adding station number with specified sequence
- Reusing of parameters set
- Support mathematics functions in Step & Repeat with Chart
- Custom variable



- ▶ Bleed and Overlap
For bleed function, Nest Sharp not only provides "Bleed Inter-Space" mode, but also provides "Bleed All" mode. "Adjust Overlap" function can help operators modify the overlap areas between different stations easily.
- ▶ Station number
Operators can set different station number for different box category. Meanwhile, the start reference point, sequence style, prefix and suffix for the station number can all be changed conveniently.

► Step&Repeat with CAD layout

Operators will find it easy to apply graphics on the CAD layout. PaSharp step&repeat is able to adjust the position of graphics and station structural automatically which significantly improves the efficiency of the step&repeat operation.

► Interactive Step&Repeat

This step&repeat method provides an object-oriented way of doing step&repeat which offers great convenience for operators.

► Step&Repeat with Chart

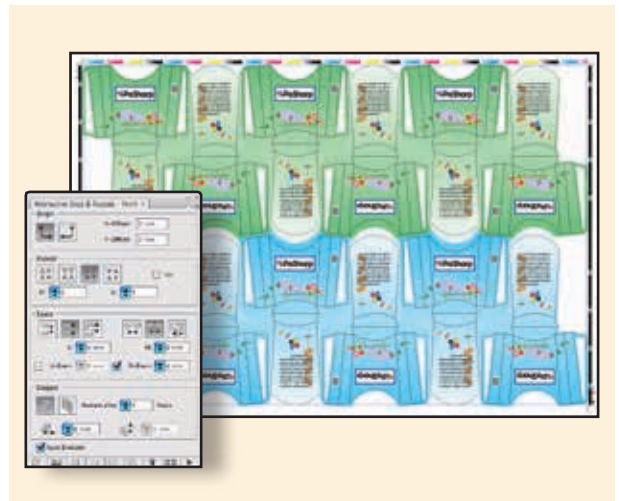
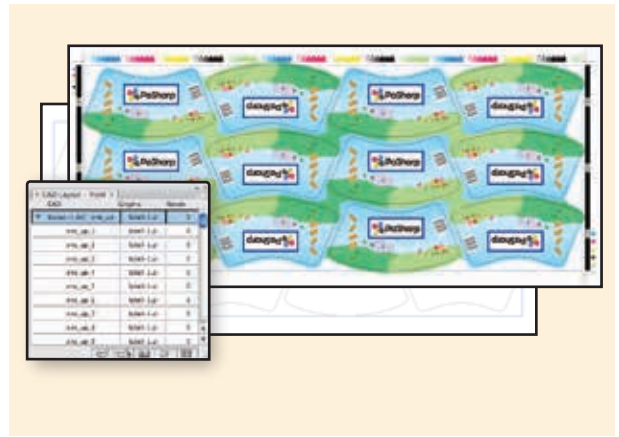
Operators can set a series of step&repeat parameters such as distance, rotation angle etc. Parameter set function enables operators to do step&repeat with the same parameters or pre-defined variables of mathematics functions in a second.

► Reverse CAD

When operators need to do the reverse step&repeat, just by a simple click, the reverse work will be done.

► Anchor Tool

Operators can adjust stations easily with anchor tool by measuring distance between two stations.

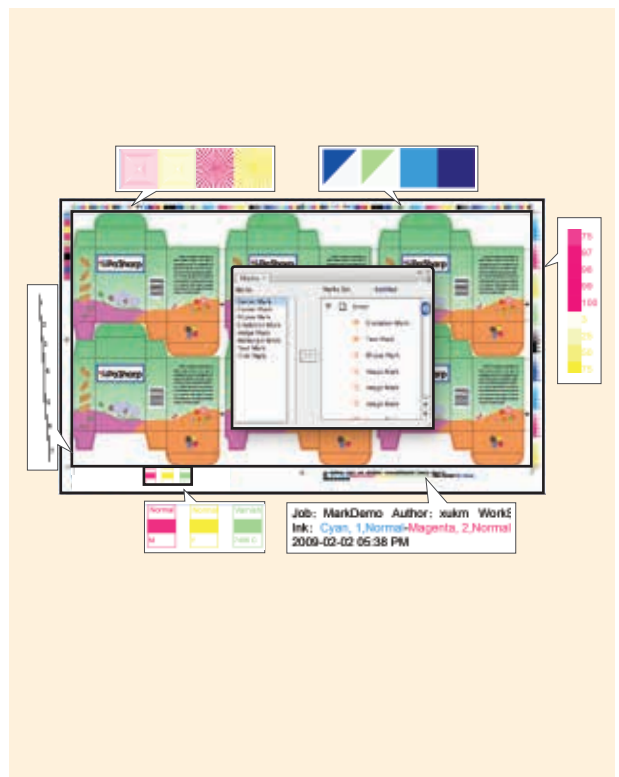


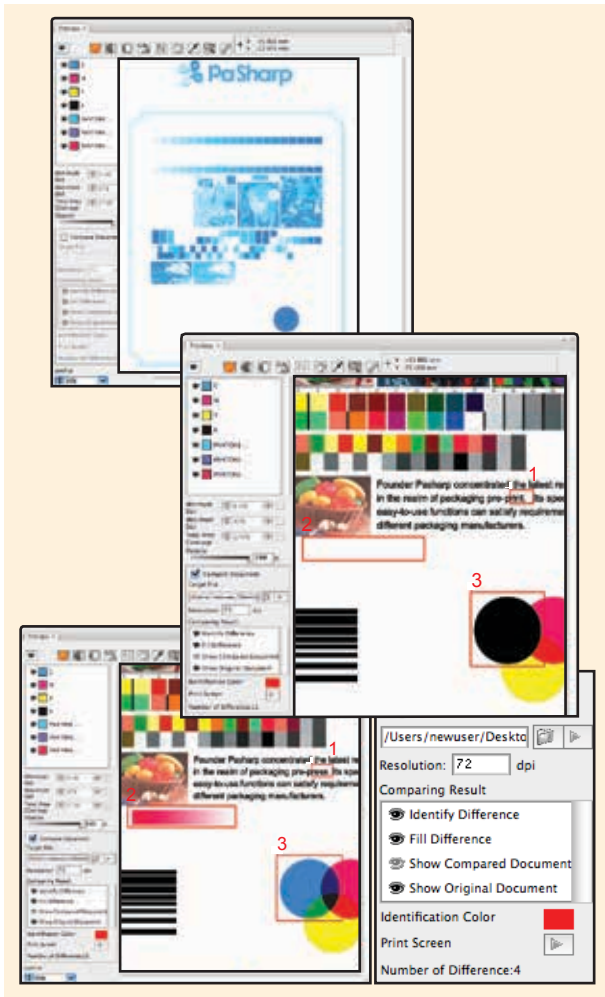
Mark#(Mark Sharp)

- Dozens of marks for printing
- Import customized marks
- Parameter set function

► Mark

Besides the most frequently used marks such as center marks, corner marks, etc. Operators can also add image mark, trim mark or other customized marks. By saving the marks parameters set, operators can reuse it in other files at any time.

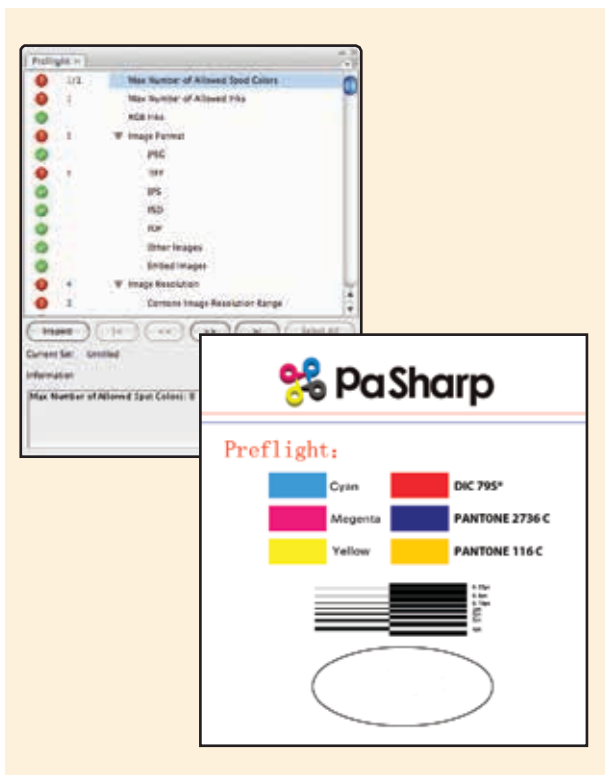




Eye#(Eye Sharp)

- Various preview modes: separations preview, negative preview, positive preview
- 100000% magnification with modification function
- Minimum dot preview
- Files comparison function
- Specified area and origin comparison

- ▶ Three different types of preview mode: separations preview, negative preview and positive preview.
- ▶ With the minimum dot preview function, operators can easily find even the tiniest objects quickly.
- ▶ The differences between the two compared files will be marked obviously. This function is best for operators to know the modifications of the file.
- ▶ The total area coverage function can calculate the total ink consumption of the file to predict the ink cost. The exported file can be directly input to the ERP system.



Inspect#(Inspect Sharp)

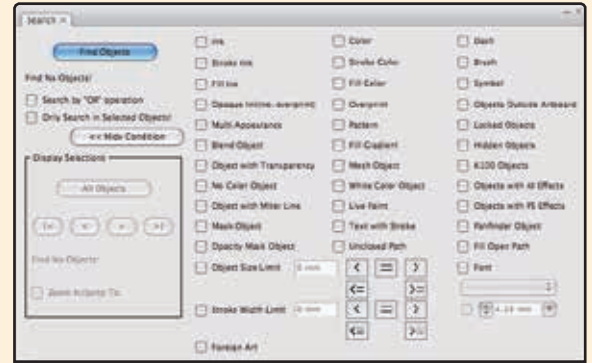
- Various kinds of preflight parameters
- Quickly locate the objects

- ▶ Parameters configurations
Operators can set stroke width, fonts, images and other parameters based on specified demands.
- ▶ Preflight
Based on the parameters, Inspect Sharp can find the objects which do not fit for the printing conditions.

Search#(Search Sharp)

- Combination of various parameters
- Quickly search the most frequently used objects
- More objects will be found with the new search engine

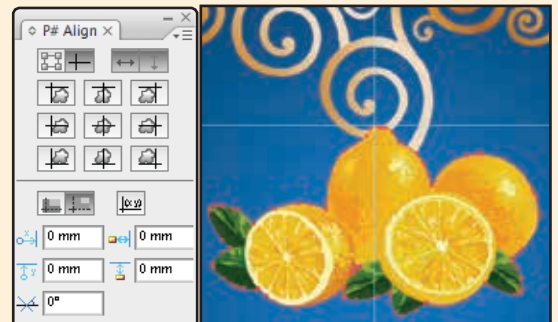
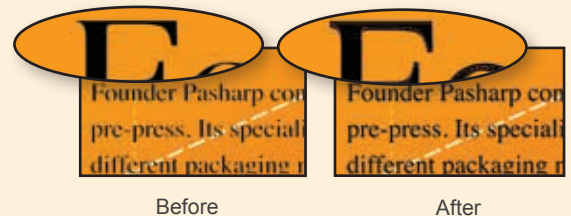
- ▶ Multi-selection function makes it possible to find the specified objects.
- ▶ Search for customized stroke and object.
- ▶ Search for error-prone objects in a second.



Tool#(Tool Sharp)

- Expand text width tool
- Pack# Guide, Pack# Align and Pack# Clip tools
- Specialized selection tools
- Instant gradient editing tool
- Outline Bitmap
- A powerful set of Path Editing Tools

- ▶ Expand text width tool can simply expand or narrow the uneven strokes of letters in the specified direction.
- ▶ Pack# Guide, Pack# Align and Pack# Clip are extremely handy for operators.
- ▶ Specialized selection tools can ensure that the selected objects will not be moved.
- ▶ Operators can edit the path more conveniently with path editing tools, such as trace tool, distortion tool etc.
- ▶ Operators can adjust colors with gradient tool directly.



Link#(Link Sharp)

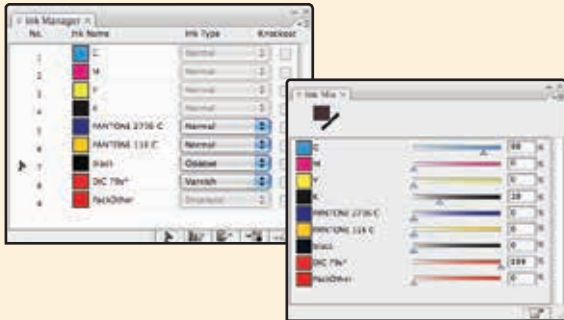
- Preserve spot color channels
- Preserve clipping paths
- Preserve layers

- ▶ Link# enables operators to instantly export any image embedded in an Adobe Illustrator file for other use or editing in other applications.
- ▶ Link# supports exporting spot color channels, clip paths and layers of embedded images.
- ▶ The export image resolution and quality keeps exactly the same as the embedded image.



TIFF Maker

- Fresh new module for gravure prepress
- Various professional settings for gravure prepress work
- TIFF Maker can export both CMYK and spot colors to ".tiff" format for proofing
- Operators can choose one or multi separations to export



Ink#(Ink Sharp)

- Ink collection and ink sequence
- Optional knockout
- Ink mix function
- Ink conversion
- Image channel mapping

► Ink Manager

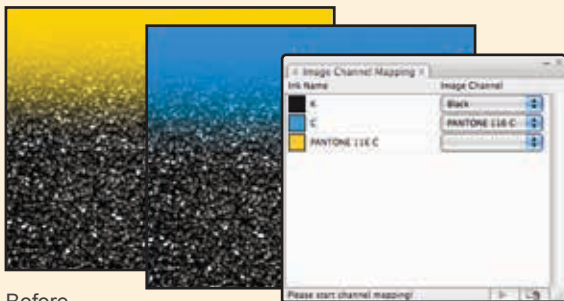
Operators can define the ink sequence in Ink Manager. Spot colors and CMYK can be easily converted to each other in Ink Manager. Optional knockout function is fairly useful for trap modifications

► Ink Mix

Mixing spot colors with CMYK is highly recognized by packaging customers.

► Image channel mapping

Directly mapping image channels in AI.



Before

After

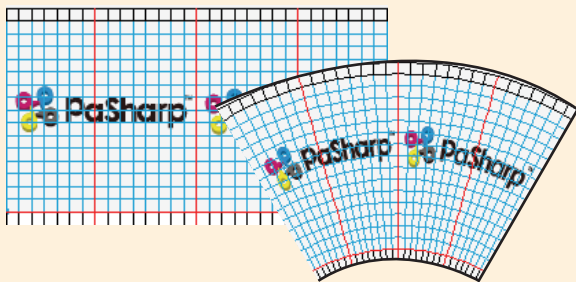
Seamless#(Seamless Sharp)

- Support nesting and sheet options searching
- Offer nesting effect view spontaneously
- Update modified result spontaneously
- Widely used in wallpaper and medicine packaging



Warp#(Warp Sharp)

- Circular, conic and complex grid warp functions
- Grid points adjustment



www.foundereagle.com



FOUNDER

**Beijing Founder Electronics Co., Ltd.
No.9, 5th Street, Shangdi Information Industry Base
Haidian District, Beijing 100085, China**

**International Business Division
Fax: +86 10 62981440
Email: GASales@founder.com.cn**

**For more products, sales and technical support information,
please visit our website at <http://www.foundereagle.com>**