



EagleDot/EagleProof

Advanced Proofing Solutions

Full range of proofing solutions for most leading inkjet printers.

EagleProof is an easy-to-use pre-RIP proofing application that accepts PS, PDF & EPS files and produces accurate output predicting color and content.

For post-RIP proofing, EagleDot accepts 1-bit TIFF files and generates dot-preciseproofs predicting color and screen.

Color creates value! Founder proofing solutions help you save time and reduce costs.

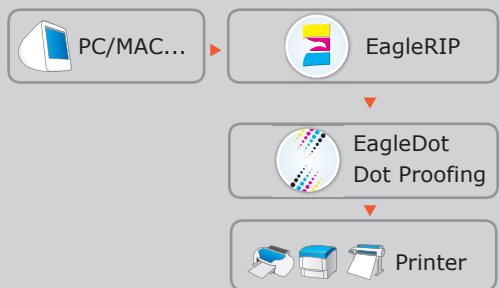




EagleDot/EagleProof Advanced Proofing Solutions

EagleDot

The EagleDot post-RIP proofing solution can accept 1-bit tiff format files. With the RIP option EagleDot can additionally support all functions of EagleProof. EagleDot is geared towards production environments requiring accurate contract proofing such as those found in commercial printers, publishing houses, advertising agencies and service bureaus.



EagleProof

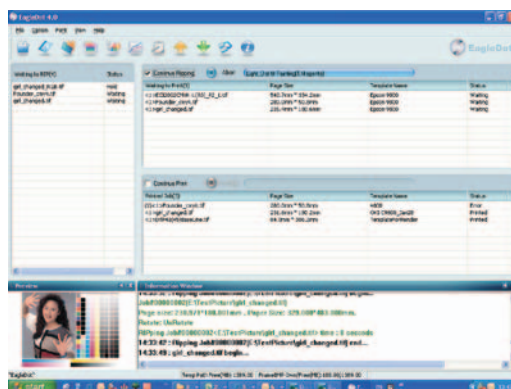
The EagleProof pre-RIP proofing solution can accept PS, PDF, EPS, Tiff, and PRN file formats.

EagleProof is the perfect color and content proofing solution for independent designers, advertising/design agencies, publishers and newspapers.



New intuitive GUI makes it easier to use

The main functions of EagleDot/EagleProof are easily accessed via the intuitive GUI, making it simple for graphic designers, printers or publishers to use.



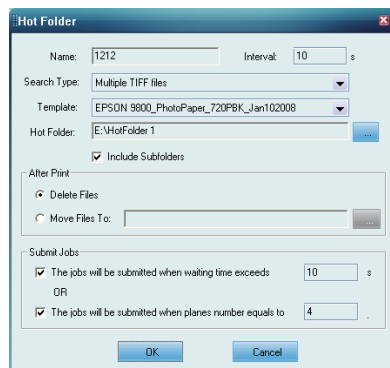
Retain Black printing for lower production costs

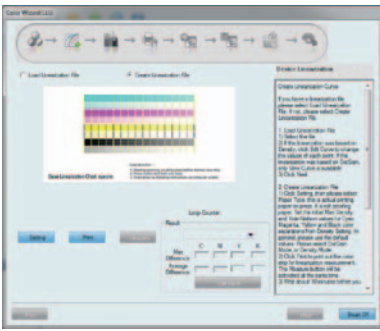
EagleDot/EagleProof Retain Black ink feature provides for true Retain Black printing of text and gray elements for lower ink usage and sharper text reproduction.

Automated proof production

EagleProof can accept jobs directly from Windows NT Pipe, Appletalk, and Hot Folders.

EagleDot accepts jobs through Hot Folders which can be individually configured for color, content, file type, and output media.

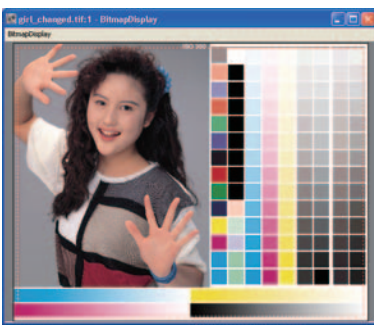




Simple color calibration means speedy setup

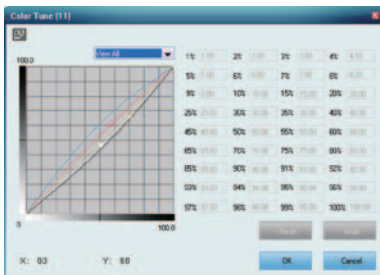
Digital proofing users no longer have to struggle with time-consuming color calibration. With Founder EagleDot/EagleProof you can accurately calibrate color with the help of an easy-to-use Color Calibration Wizard. The wizard includes features that generate linearization curves, ink coverage amounts, device profiles, and source ICC profiles. You may also load existing source ICC profiles and perform circular recursion to reduce average color difference and more.

Unlike conventional calibration utilities EagleDot/EagleProof can also automatically identify deviations from the original state - and fix the problem. This ensures consistency of color proof quality, and reduces labor costs.



Proof Preview

EagleDot/EagleProof provide a fast screen preview down to dot level allowing you to check file quality and content before committing the job to expensive ink and media.



Color Tune

With the Color Tune function it is easy to make small color adjustments.



Save media and time with automatic tiling and ganging

EagleDot/EagleProof auto-ganging function will combine pages or jobs of varying size allowing the user to reduce costs by optimizing media usage.

Save time, money and stress by accurately predicting press output

Founder EagleDot digital screen proofing produces contract proofs based upon the same 1-bit TIFF created for your imagesetter (CTF) or platesetter (CTP). This enables the user to check rosette patterns for moiré before creation of film or CTP plates. EagleDot accurately predicts the color, content and screen dot of the final press output to allow the user to match proof and print.

Recommended Configuration

CPU : Pentium 4, 2.8 GHz or above

OS : Windows XP, 2003, Windows 7

Memory : 1 GB or above

Hard Disk : 80 GB or above

Display : ≥17 inches, true color, 1024x768 dpi or above



Key Features

- New Color Calibration Tool with circular fine-tuning makes it easier to achieve lower Delta E values.
- EagleDot: using 1-bit tiff files proofer output simulates the real dot shape more precisely and moiré patterns can be predicted.
- ICC profiles may be created without using 3rd party software.
- Automatic tiling and ganging.
- Flexible network printing: NT Pipe (Windows), AppleTalk & Hot Folder.
- Powered by X-Rite color technology with color calibration support using X-Rite Eye-One, IO, iSis.
- Supports leading digital proofing devices including those from Epson, HP, Canon.
- SDK (Software Development Kit) available for OEMs

FOUNDER

Beijing Founder Electronics Co., Ltd.
No.9, 5th Street, Shangdi Information Industry Base
Haidian District, Beijing 100085, China

International Business Division
Fax: +86 10 62981440
Email: GASales@founder.com.cn

For more products, sales and technical support information,
please visit our website at <http://www.founder.com.cn/en>